

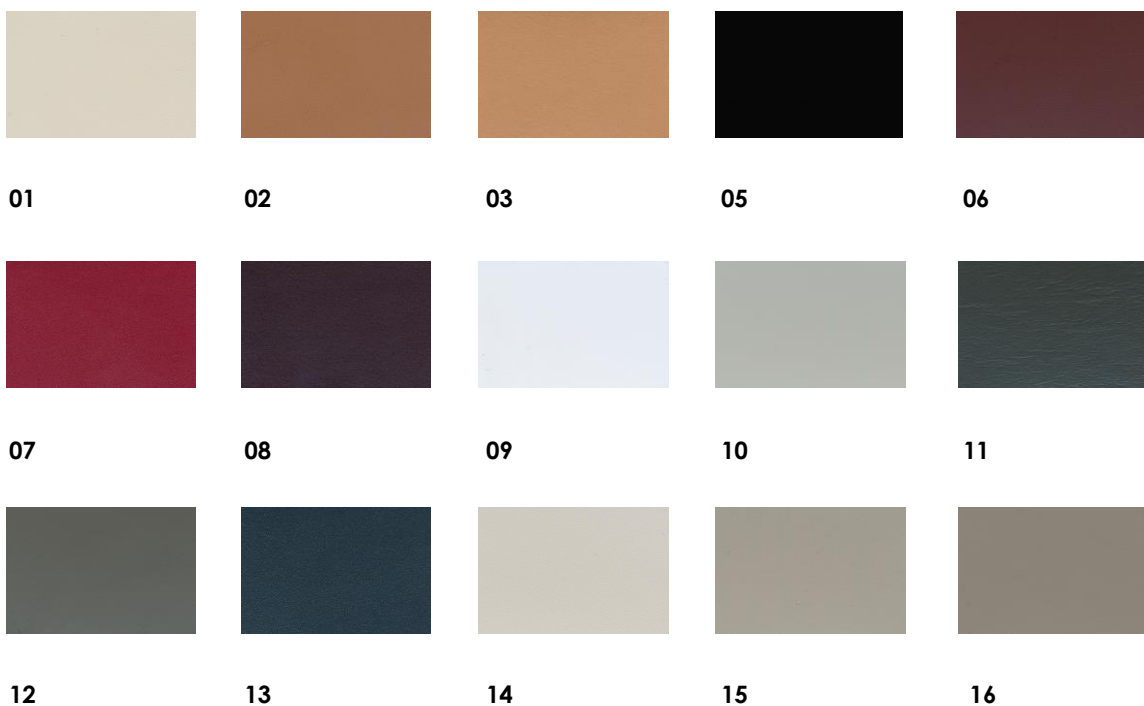
scheda tecnica - technical sheet

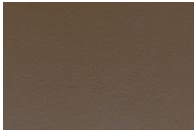
**EN PLAIN**

<b>Caratteristiche tecniche</b> - technical features	
<b>Categoria</b> - category	<b>02</b>
<b>Composizione</b> - composition	
<b>CUOIO PIENO FIORE – HIDE “GRAIN LEATHER”</b>	
<b>Concia</b> - tanning	
<b>vegetale in bottale idrorepellente (tranne col. 03)</b> in water-repellent drums (except col. 03)	
<b>Taglia</b> - size	<b>1,40 mq</b>
<b>Spessore</b> - thickness	<b>2,5 mm</b>
<b>Tinta</b> - tanned	<b>vegetale</b> - vegetable
<b>Ingrasso</b> - fattening	<b>vegetale</b> - vegetable
<b>Resistenza alla luce</b> - light resistance	<b>4</b>
<b>Sfregamento</b> -rubbing	<b>scala dei grigi</b> - grayscale
	<b>50 giri</b> - laps <b>4</b>
	<b>250 giri</b> - laps <b>4</b>
	<b>500 giri</b> - laps <b>4</b>
<b>Ignifugo</b> - fireproof	<b>classe 1 IM</b> – class 1 IM

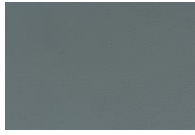


**VARIANTI COLORE – AVAILABLE COLOURS**

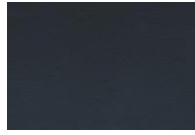




17



18



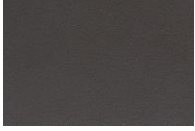
20



21



22



23

**Cuoio pieno fiore naturale, senza trattamenti, piccoli graffi e imperfezioni sono caratteristiche della natura del cuoio di 1° qualità.**

Natural hide "grain leather" without treatments; little scratches and imperfections are natural features that belong to hide first quality.