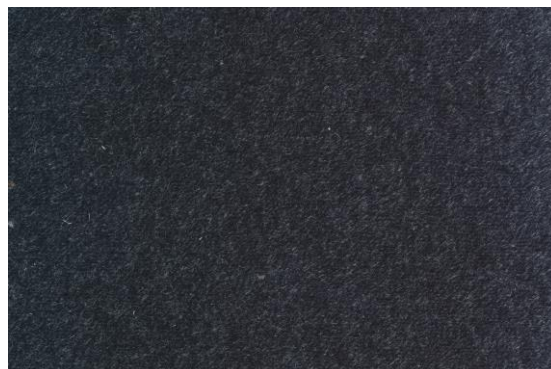


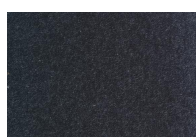
scheda tecnica - technical sheet

## ETOILE

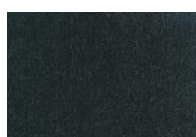
<b>Caratteristiche tecniche</b> - technical sheet	
<b>Categoria</b> - category	<b>07</b>
<b>Composizione</b> - composition	<b>PELO - PILE: 20 LI - 80 PES</b> <b>FONDO - GROUND: 100 PES</b>
<b>Altezza</b> - height	<b>140 cm</b>
<b>Peso</b> - weight	<b>610 gr/mt</b>
<b>Resistenza alla luce</b> - light resistance	<b>6</b>
<b>Resistenza all'abrasione</b> - martindale	<b>97.000</b>
<b>Pilling</b> - pilling	<b>4</b>
<b>Lavaggio</b> - cleaning instruction	



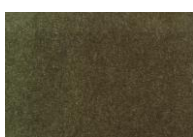
## VARIANTI COLORE – AVAILABLE COLOURS



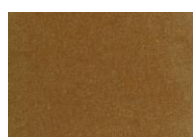
01



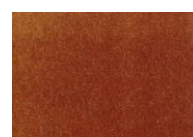
02



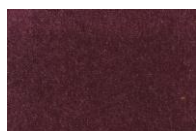
03



04



05



06

**Differenze di tonalità, altezza pelo, pesi, ecc... sono inevitabili in quanto dovute all'artigianalità della lavorazione. Non costituiscono difetto, ma sono ulteriore indice della qualità artigianale del prodotto.**

Any flames of colors, shadings, variable pile height are typical due to the handcrafting of the fabric. Should not be considered a fault.