
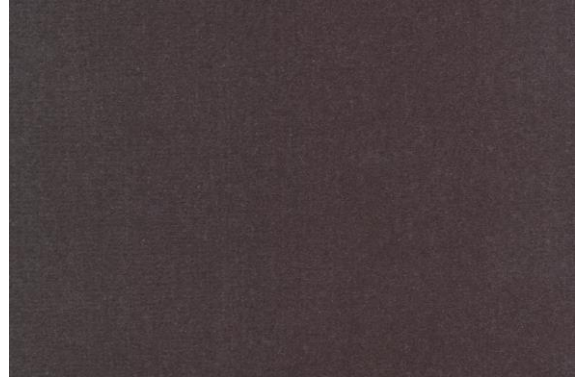


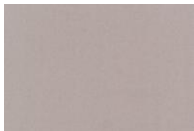
scheda tecnica - technical sheet

SHADES

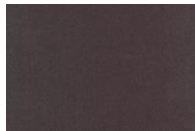
Caratteristiche tecniche - technical sheet	
Categoria - category	07
Composizione - composition	100 CO
Altezza - height	140 cm
Peso - weight	540 gr/mt
Resistenza alla luce - light resistance	4/5
Resistenza all'abrasione - martindale	70.000
Pilling - pilling	5
Lavaggio - cleaning instruction	



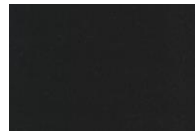
VARIANTI COLORE – AVAILABLE COLOURS



01



02



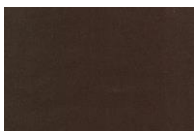
03



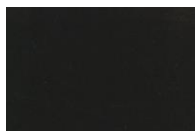
04



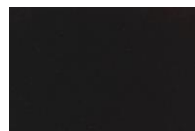
05



06



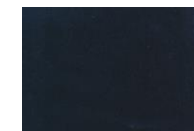
07



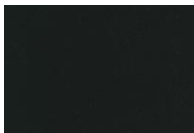
08



09



10



11

Questo tessuto, è stato tinto in pezza. Seguendo un particolare processo di lavorazione. Le eventuali differenze cromatiche sono da intendersi normali e da valutare con le abituali tolleranze dei tessuti tinti in pezza.

This is pieces-dyed fabric. Any colour uniformity and shade variations should not be considered a defect but an important fabric property due to the particular production process. Use piece dyed fabric standards for judging the fabric.

IMPORTANTE - IMPORTANT

Per ravvivare il velluto, dopo il trasporto e aver tolto l'imballo, si consiglia vivamente di vaporizzare il rivestimento senza rimuoverlo dalla struttura mantenendosi ad una distanza di circa 10 cm. spazzolare poi la superficie del tessuto nella direzione del pelo con una spazzola a setole morbide. Se necessario ripetere l'operazione.

In case of pile crushing after transport, it is highly recommended to steam the cover keeping it on the frame. When steaming keep a 10 cm distance from the fabric. After steaming brush lightly the surface following the pile direction. If necessary, repeat the operation.