

scheda tecnica - technical sheet

**CACHEMIRE**

<b>Caratteristiche tecniche</b> - technical features	
<b>Composizione</b> - composition	<b>100% WS</b>
<b>Lavorazione</b> - working	<b>LAVORAZIONE TRICOT 6 FILI (macchina maglieria) -</b> TRICOT WORKING 6 YARNS (knitting machine)
<b>Utilizzabile per</b> - usable for	<b>PLAID - BLANKET</b> <b>cm. 120x180</b> <b>MAXIPLAID - BLANKET</b> <b>cm. 170x200</b> <b>COPERTA - BLANKET</b> <b>cm. 230x260</b> <b>CUSCINO - CUSHION</b> <b>cm. 35x50 - cm. 40x40 - cm. 60x60</b>
<b>Lavaggio</b> - washing instructions	



**DIS. 1**



**DIS. 2**

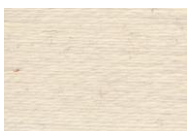


**DIS. 3**



**SIMON**

**VARIANTI COLORE - AVAILABLE COLOURS**



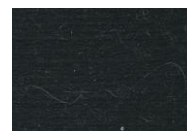
01/N



20/N



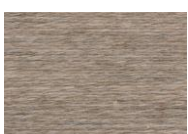
21/N



22



24/N



40/N



42/N



43/N



47/N



52/N



61



67



68



69



70/N



71



72/N



73